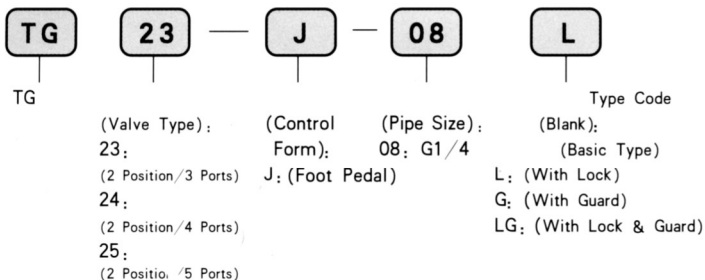


● Ordering Code



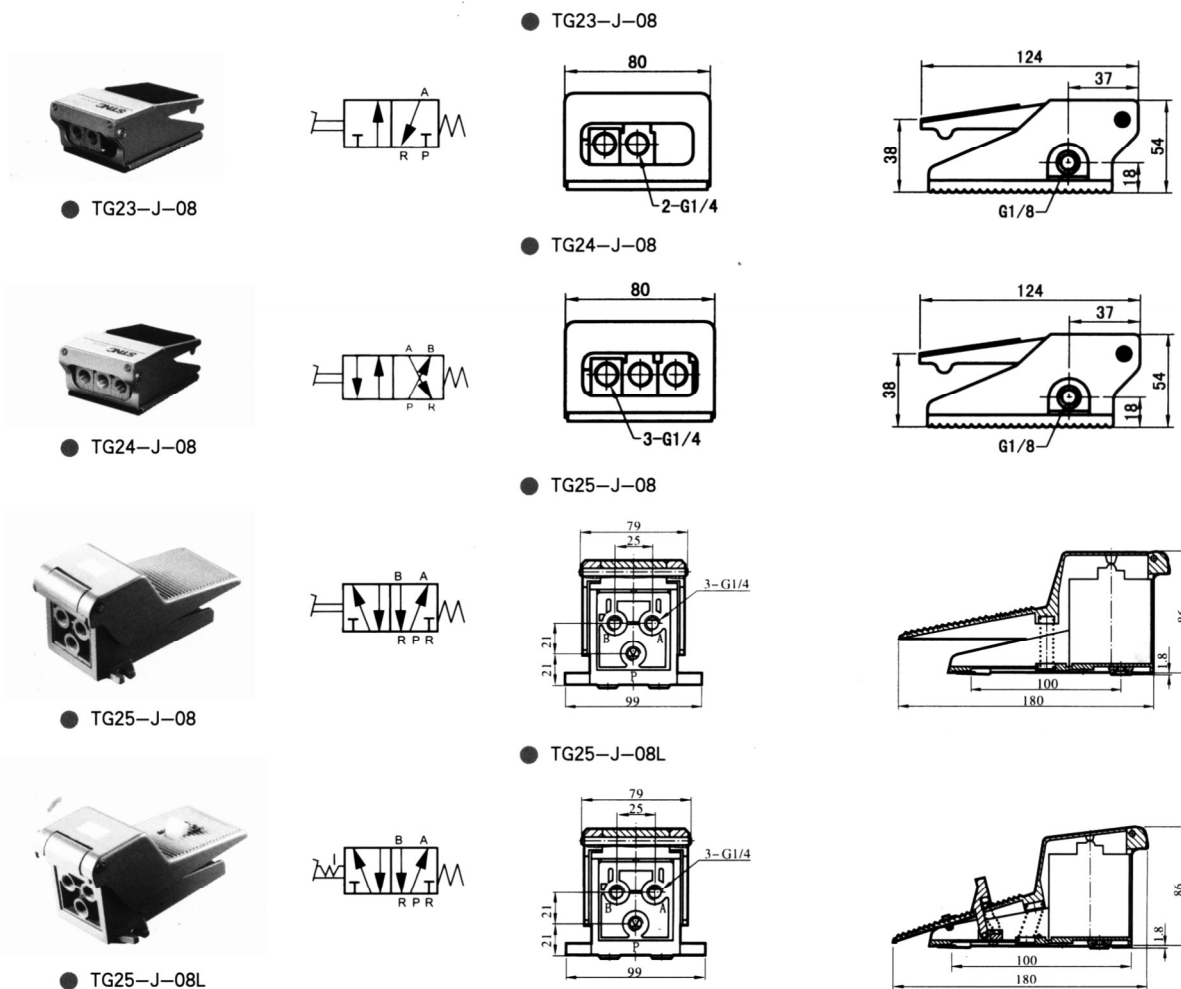
Foot Valve:

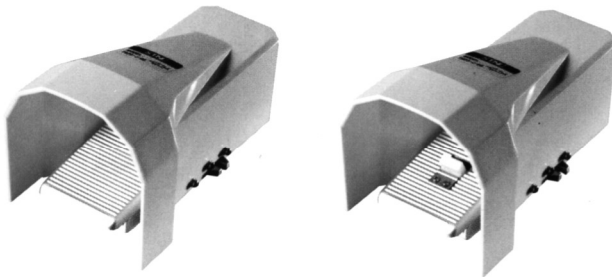
It is a foot control valve, widely applied to all kinds of pneumatic system. With small operation force, and emancipation of hands. The R and P ports of two-position & three-port valve can be interchangeable to change the normally close to normally open.

■ Technical Parameter

Item Specification	Valve Type	(Pipe Thread)	mm (Nominal Diameter)	Applicable Fluid	(Pressure Range)	(Operating Method)	(Lubrication)	(Applicable Temperature)
TG23-J-08	(2 Position/3 Ports)	G1/4	8	(Compressed Air)	0~0.8MPa	(Direct Action Type)	(Not Required)	-5~60°C
TG24-J-08	(2 Position/4 Ports)	G1/4	8					
TG25-J-08	(2 Position/5 Ports)	G1/4	8					
TG25-J-08L	(2 Position/5 Ports)	G1/4	8					
TG25-J-08G	(2 Position/5 Ports)	G1/4	8					
TG25-J-08LG	(2 Position/5 Ports)	G1/4	8					

■ Figure Dimension



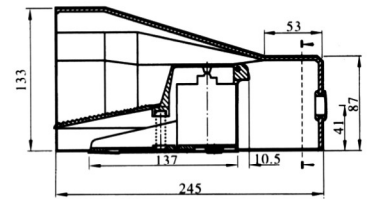
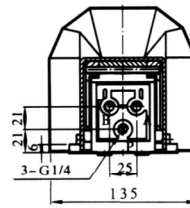


● TG25-J-08G

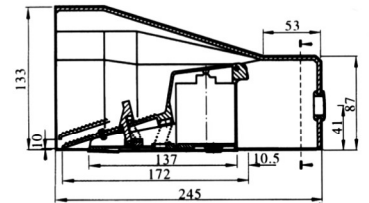
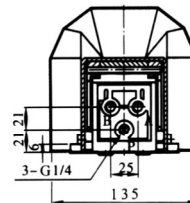


● TG25-J-08LG

● TG25-J-08G



● TG25-J-08LG



Check Valve:

This series of product is a kind of one-way control valve. The medium through this valve can only flow in one-way. It is in reasonable design and simple structure, with handsome shape and wide application.



● CV-06



● CV-08



● CV-10



● CV-15

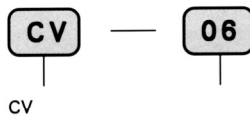


● CV-20



● CV-25

Ordering Code



CV

(Pipe Size):

06: G1/8

08: G1/4

10: G3/8

15: G1/2

20: G3/4

25: G1

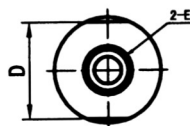
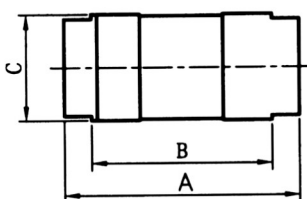
Graphics Sign



Technical Parameter

Item	(Pipe Thread)	mm (Nominal Diameter)	(Applicable Fluid)	(Pressure Range)	(Min. Operating Pressure)	(Applicable Temperature)
CV-06	G1/8	6	(Compressed Air)	0.05~1.2 MPa	0.05MPa	-5~60°C
CV-08	G1/4	8				
CV-10	G3/8	10				
CV-15	G1/2	15				
CV-20	G3/4	20				
CV-25	G1	25				

Figure Dimension



Specification	A	B	C	D	E
CV-06	64	53	φ 28	24	G1/8
CV-08	64	53	φ 28	24	G1/4
CV-10	86	66	φ 39.5	36	G3/8
CV-15	86	66	φ 39.5	36	G1/2
CV-20	112	90	φ 53.5	46	G3/4
CV-25	112	90	φ 53.5	46	G1